

SEMCO Model ST2505

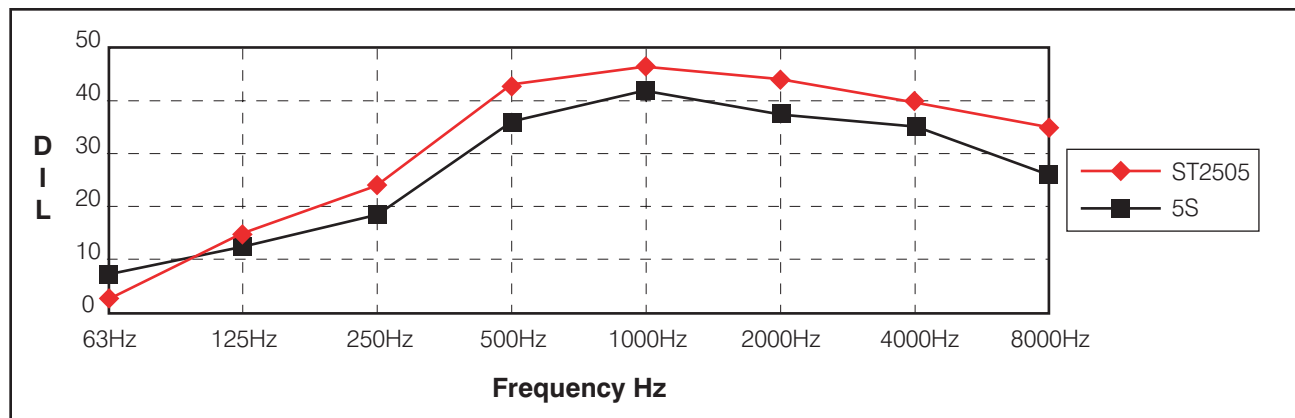
Compared To

IAC Model 5S



INDEPENDENTLY CERTIFIED TEST DATA

Data published above is derived from comparative test conducted by an Independent Certified Test facility. Tests are in accordance with ASTM E477. For testing purposes, specified lengths of straight duct were used both upstream and downstream of the attenuators. Static pressure losses must therefore be adjusted if the unit is installed at or near transitions or elbows, or at the intake or discharge of the system. Data published herein was obtained from 24"x24" production run units.



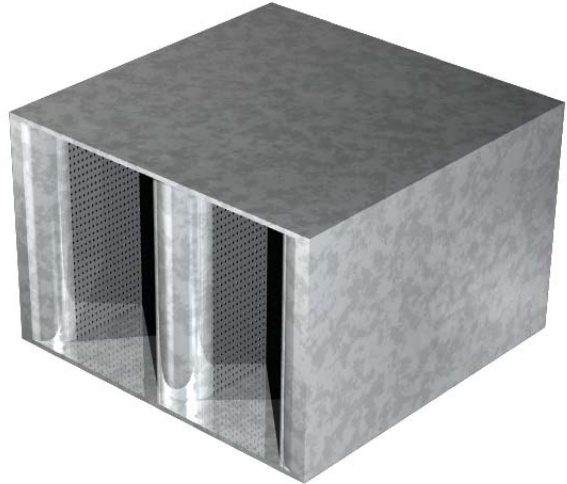
Comparison of DYNAMIC INSERTION LOSS at 1000 fpm									
		63Hz	125Hz	250Hz	500Hz	1000Hz	2000Hz	4000Hz	8000Hz
SEMCO Model No.	ST2505	3	13	24	42	46	44	40	35
IAC Model No.	5S	6	12	19	36	42	38	34	26



SEMCO Model ST5005

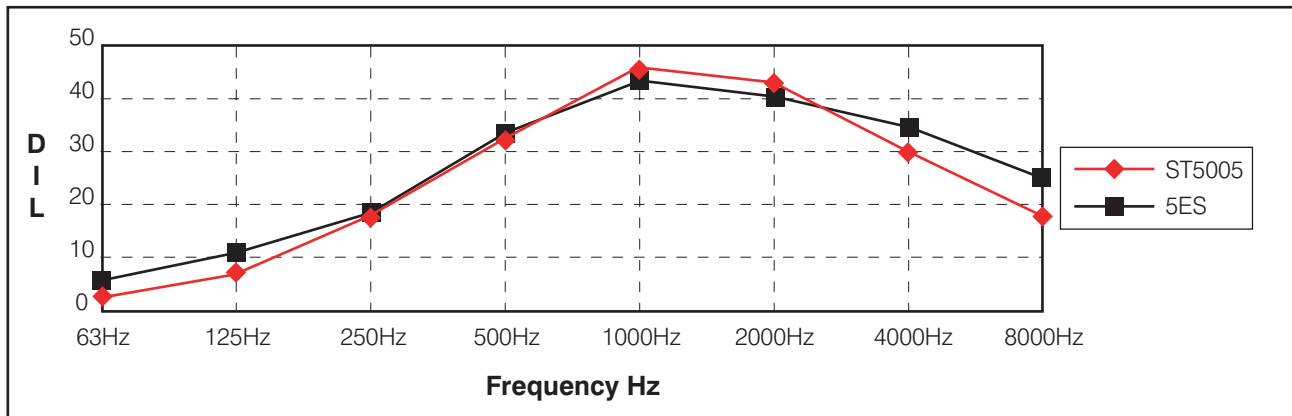
Compared To

IAC Model 5ES



INDEPENDENTLY CERTIFIED TEST DATA

Data published above is derived from comparative test conducted by an Independent Certified Test facility. Tests are in accordance with ASTM E477-90. For testing purposes, specified lengths of straight duct were used both upstream and downstream of the attenuators. Static pressure losses must therefore be adjusted if the unit is installed at or near transitions or elbows, or at the intake or discharge of the system. Data published herein was obtained from 24"x24" production run units.



Comparison of DYNAMIC INSERTION LOSS at 1000 fpm

		63Hz	125Hz	250Hz	500Hz	1000Hz	2000Hz	4000Hz	8000Hz
SEMCO Model No.	ST5005	2	8	18	33	44	42	30	19
IAC Model No.	5ES	5	11	18	34	43	40	33	24



SEMCO Model ST7505

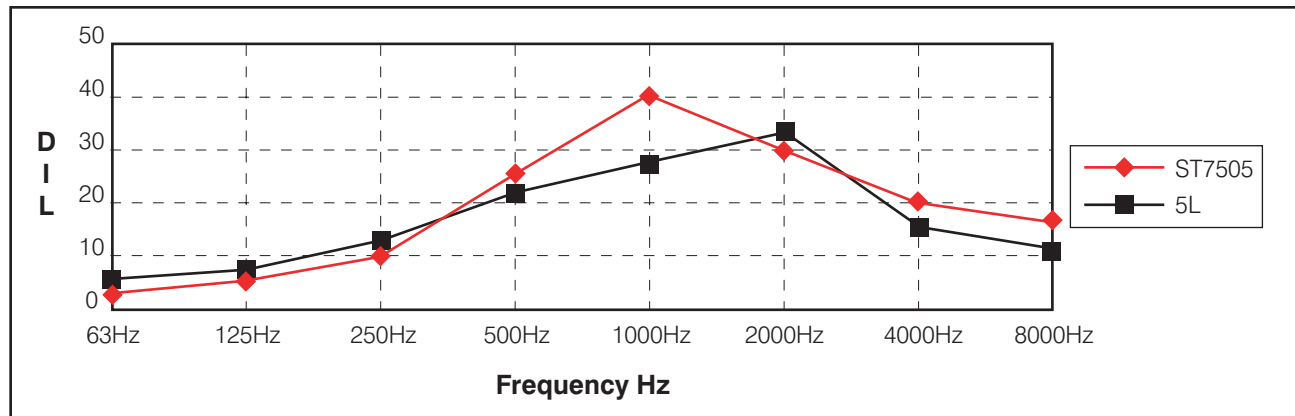
Compared To

IAC Model 5L



INDEPENDENTLY CERTIFIED TEST DATA

Data published above is derived from comparative test conducted by an Independent Certified Test facility. Tests are in accordance with ASTM E477. For testing purposes, specified lengths of straight duct were used both upstream and downstream of the attenuators. Static pressure losses must therefore be adjusted if the unit is installed at or near transitions or elbows, or at the intake or discharge of the system. Data published herein was obtained from 24"x24" production run units.



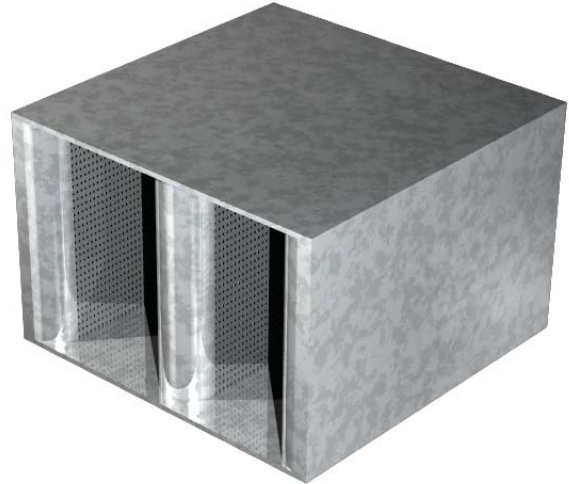
Comparison of DYNAMIC INSERTION LOSS at 1000 fpm									
		63Hz	125Hz	250Hz	500Hz	1000Hz	2000Hz	4000Hz	8000Hz
SEMCO Model No.	ST7505	2	6	12	25	40	31	20	13
IAC Model No.	5L	4	6	11	21	28	33	16	11



SEMCO Model LF2505

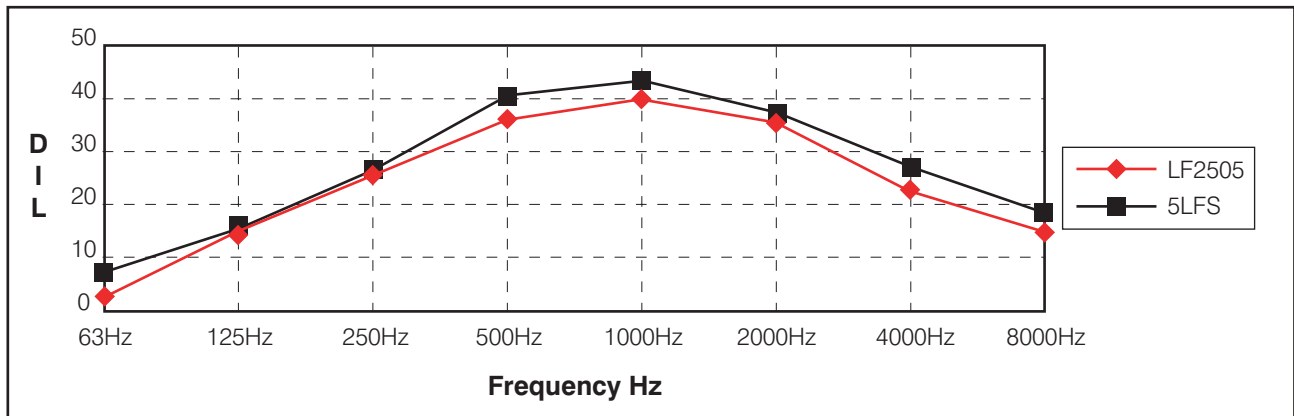
Compared To

IAC Model 5LFS



INDEPENDENTLY CERTIFIED TEST DATA

Data published above is derived from comparative test conducted by an Independent Certified Test facility. Tests are in accordance with ASTM E477-90. For testing purposes, specified lengths of straight duct were used both upstream and downstream of the attenuators. Static pressure losses must therefore be adjusted if the unit is installed at or near transitions or elbows, or at the intake or discharge of the system. Data published herein was obtained from 24"x24" production run units.



Comparison of DYNAMIC INSERTION LOSS at 1000 fpm									
		63Hz	125Hz	250Hz	500Hz	1000Hz	2000Hz	4000Hz	8000Hz
SEMCO Model No.	LF2505	3	15	27	37	41	35	24	16
IAC Model No.	5LFS	6	15	27	40	42	37	26	18



SEMCO Model LF5005

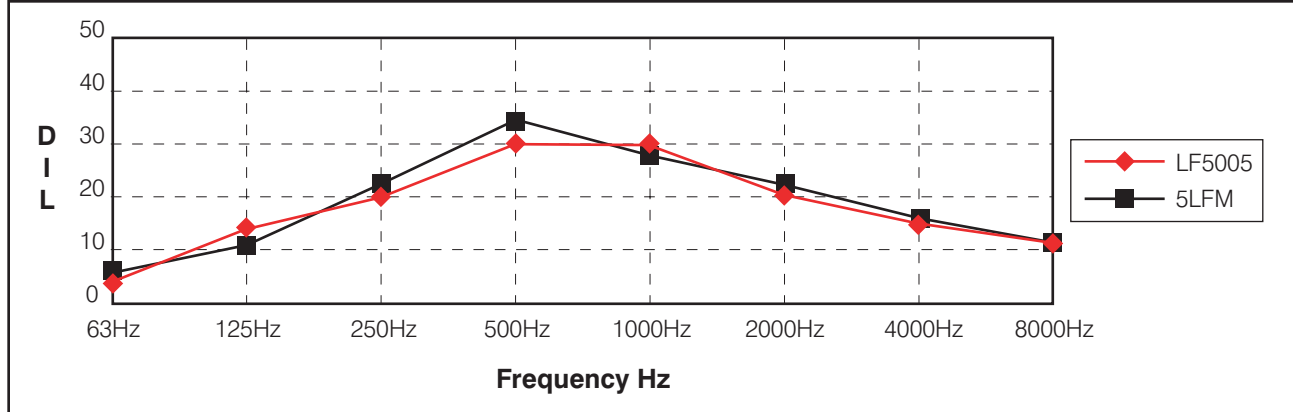
Compared To

IAC Model 5LFM



INDEPENDENTLY CERTIFIED TEST DATA

Data published above is derived from comparative test conducted by an Independent Certified Test facility. Tests are in accordance with ASTM E477. For testing purposes, specified lengths of straight duct were used both upstream and downstream of the attenuators. Static pressure losses must therefore be adjusted if the unit is installed at or near transitions or elbows, or at the intake or discharge of the system. Data published herein was obtained from 24"x24" production run units.



Comparison of DYNAMIC INSERTION LOSS at 1000 fpm									
		63Hz	125Hz	250Hz	500Hz	1000Hz	2000Hz	4000Hz	8000Hz
SEMCO Model No.	LF5005	4	13	20	30	30	20	14	11
IAC Model No.	5LFM	5	11	21	33	29	21	15	11



SEMCO Model LF7505

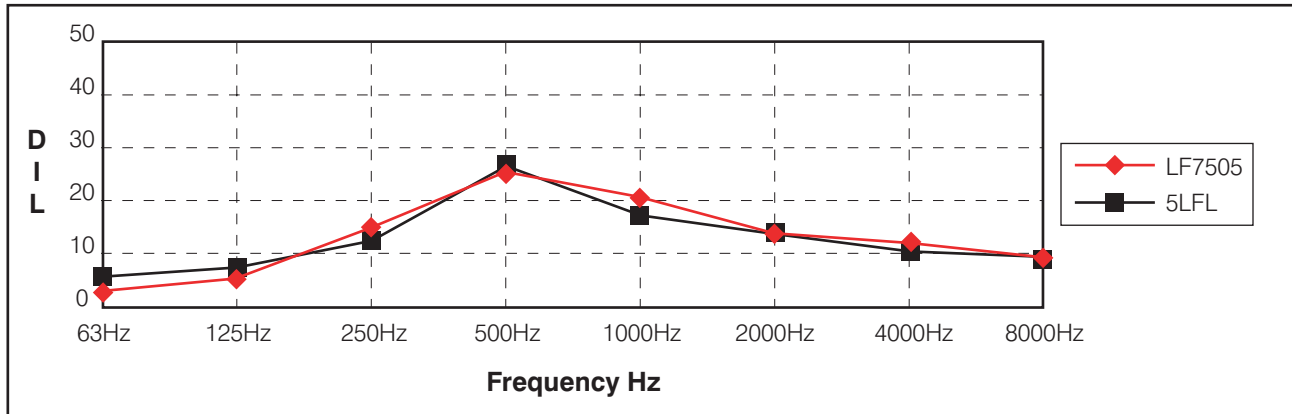
Compared To

IAC Model 5LFL



INDEPENDENTLY CERTIFIED TEST DATA

Data published above is derived from comparative test conducted by an Independent Certified Test facility. Tests are in accordance with ASTM E477. For testing purposes, specified lengths of straight duct were used both upstream and downstream of the attenuators. Static pressure losses must therefore be adjusted if the unit is installed at or near transitions or elbows, or at the intake or discharge of the system. Data published herein was obtained from 24"x24" production run units.



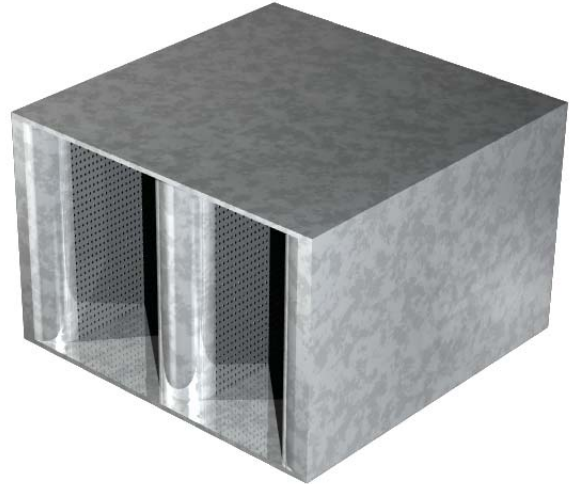
Comparison of DYNAMIC INSERTION LOSS at 1000 fpm									
		63Hz	125Hz	250Hz	500Hz	1000Hz	2000Hz	4000Hz	8000Hz
SEMCO Model No.	LF7505	3	8	15	26	20	13	11	8
IAC Model No.	5LFL	5	9	14	27	19	13	10	8



SEMCO Model MFS5006

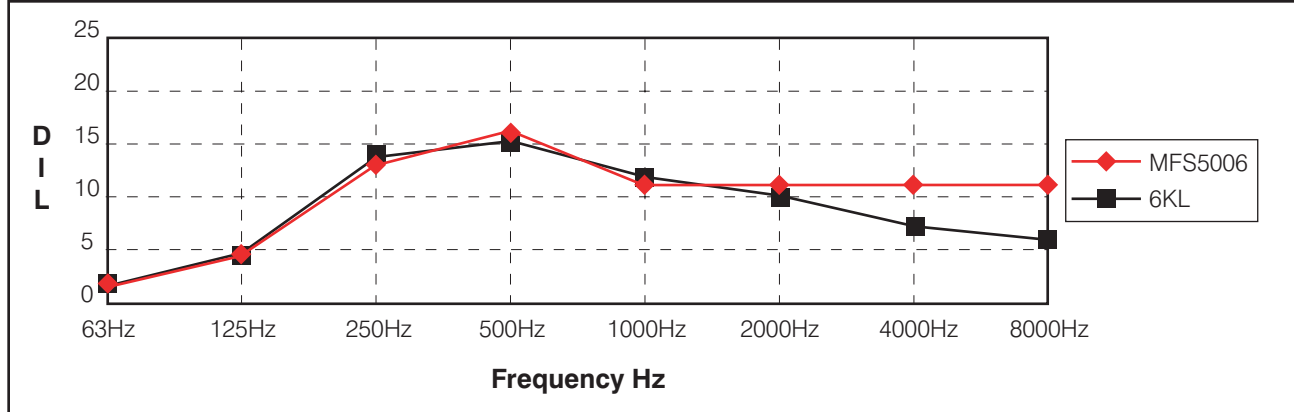
Compared To

IAC Model 6KL



INDEPENDENTLY CERTIFIED TEST DATA

Data published above is derived from comparative test conducted by an Independent Certified Test facility. Tests are in accordance with ASTM E477. For testing purposes, specified lengths of straight duct were used both upstream and downstream of the attenuators. Static pressure losses must therefore be adjusted if the unit is installed at or near transitions or elbows, or at the intake or discharge of the system. Data published herein was obtained from 24"x30" production run units.



Comparison of DYNAMIC INSERTION LOSS at 1000 fpm									
		63Hz	125Hz	250Hz	500Hz	1000Hz	2000Hz	4000Hz	8000Hz
SEMCO Model No.	MFS5006	1	4	14	17	11	11	11	11
IAC Model No.	6KL	1	4	14	15	11	10	7	6

